

# CERTIFICATE OF LOCATION OF GOVERNMENT CORNER

EAST QUARTER \_\_\_\_\_ Corner of Section 3 , Township 107N , Range 39W

5th Principal Meridian, State of Minnesota, County of MURRAY

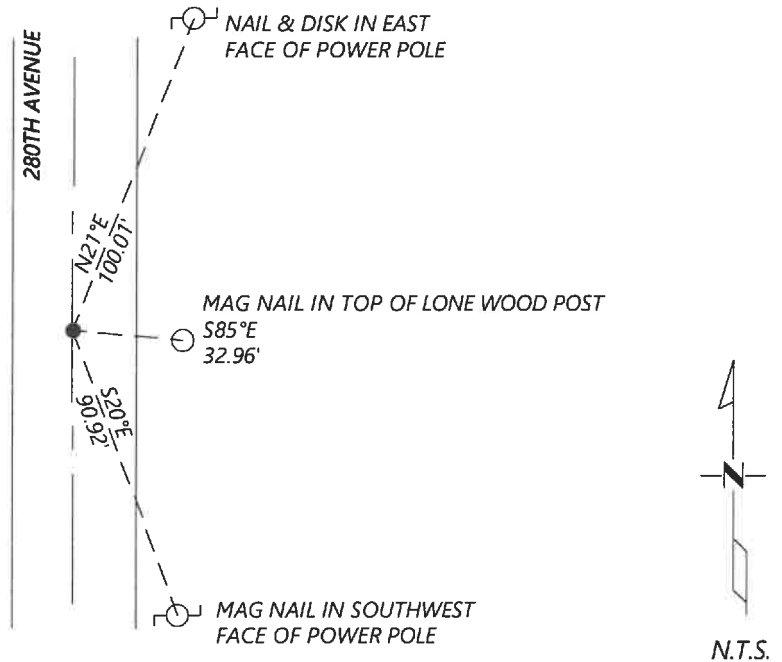
At the corner location shown on the sketch:

On 8/27/2020 found a NO. 4 REBAR WITH CAP LS #12967 DOWN 0.4FT  
DATE

left monument as found       lowered monument       removed monument (explain)

On \_\_\_\_\_ placed a \_\_\_\_\_  
DATE

### SKETCH OF REFERENCE TIES



Statement of evidence for this corner location is on back of this page.

I hereby certify that this document was researched and prepared by me or under my direct supervision and that I am a licensed Land Surveyor under the laws of the State of Minnesota.

Signature *[Handwritten Signature]*

Date 6/16/2021 License No. 45874

Title:

- Land Surveyor       Professional Engineer  
 County Surveyor       County Engineer

#### OFFICE OF THE COUNTY RECORDER

County of Murray

I hereby certify that this document was filed in the Co.

Recorder's office at \_\_\_\_\_ M. on the \_\_\_\_\_ day of \_\_\_\_\_ A.D. 20 \_\_\_\_\_

County Recorder *[Handwritten Signature]*

by JUN 22 2021, Deputy

DOCUMENT NO. \_\_\_\_\_

**Statement of Evidence:**

East Quarter Corner of Section 3, Township 107 North, Range 39 West, 5th Principal Meridian, Murray County, Minnesota.

1861 July, GLO Notes: Set post in mound.

1913 June, Survey record for Section 3 shows a stone on east edge of grade.

1980 October, Corner Certificate filed by LS 12967 shows a field stone was found and a  $\frac{1}{2}$ " rebar and cap LS 23967 was placed above it.

2016 May, Highway Department data shows that an iron pin with cap #12967 was found. Coordinates listed:  
N: 192628.42 E: 569375.69

2020 September, Westwood Professional Services searched and found an iron wit cap #12967 and one reference tie per 1980 Corner Certificate. The coordinates fit those listed per 2016 Highway Department data. The coordinates fit those listed per 2016 Highway Department data. Found monument and reference tie accepted and set two additional reference ties.

Analysis of the recovered data, field evidence and survey measurements, indicates that the monument found is the correct perpetuation of this corner. For additional information concerning this corner please contact Westwood Professional Services.